

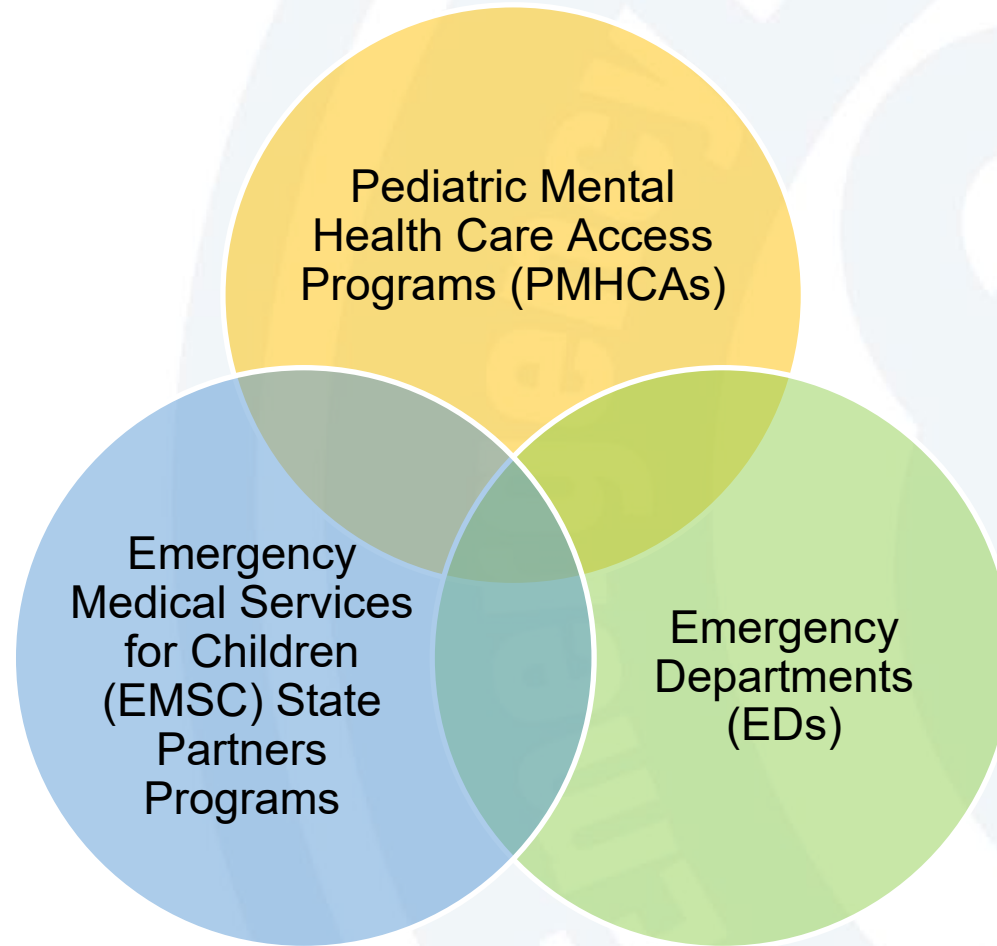
Pediatric Mental Health Care Access (PMHCA) QI Collaborative

April, 2024

Agenda:

- QI Collaborative SMART aim and Measures concepts overview
- PMHCA teams share their Aims and Measures: two teams
- QI Collaborative Next Steps

Recap and Welcome Back!



Today Objectives:

PMHCA ED Expansion Project Paths

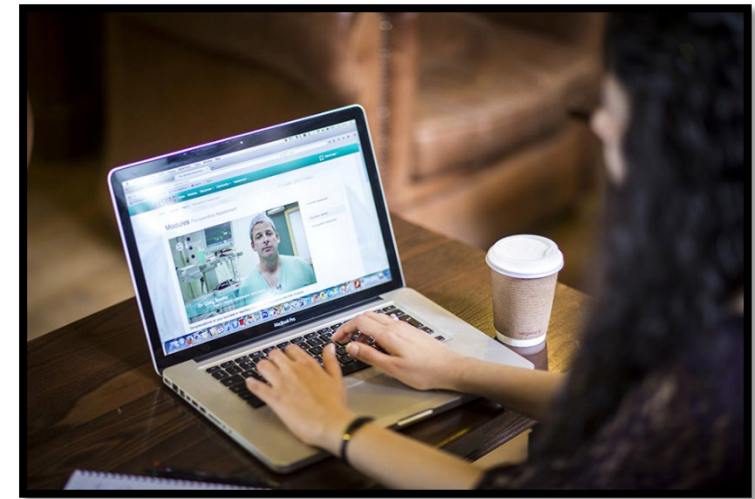
- Projects may fall into one or more of the following project "paths":
 - Education and Training (Provider-Specific)
 - Teleconsultation (Provider-to-Provider)
 - Telebehavioral Health Services (Resource Connection)



- Identify a specific SMART aim
- Current measures identification and measures resources teams use

PMHCA Education and Training

- Your team may engage ED providers by offering mental and behavioral health...
 - Training (via in-person or online modules)
 - Education



What is a SMART Aim?

- **S**pecific
- **M**easurable
- **A**chievable
- **R**ealistic
- **T**ime-bound



- An aim statement is a clear, explicit summary of what your team hopes to achieve over a specific amount of time including the magnitude of change you will achieve
- Narrower and more measurable than Global Aim

Example:

SMART AIM

Increase the percentage of suicide screenings at Hospital ED from 10% to 90% by June 2025.

Measures Used in Health Care

- Donabedian Framework



Two teams Discussion Time



Room Assignments

Room 1

Vermont

Tennessee

Michigan

Delaware

Room 2

North Carolina

Oklahoma

Chickasaw Nation

Iowa

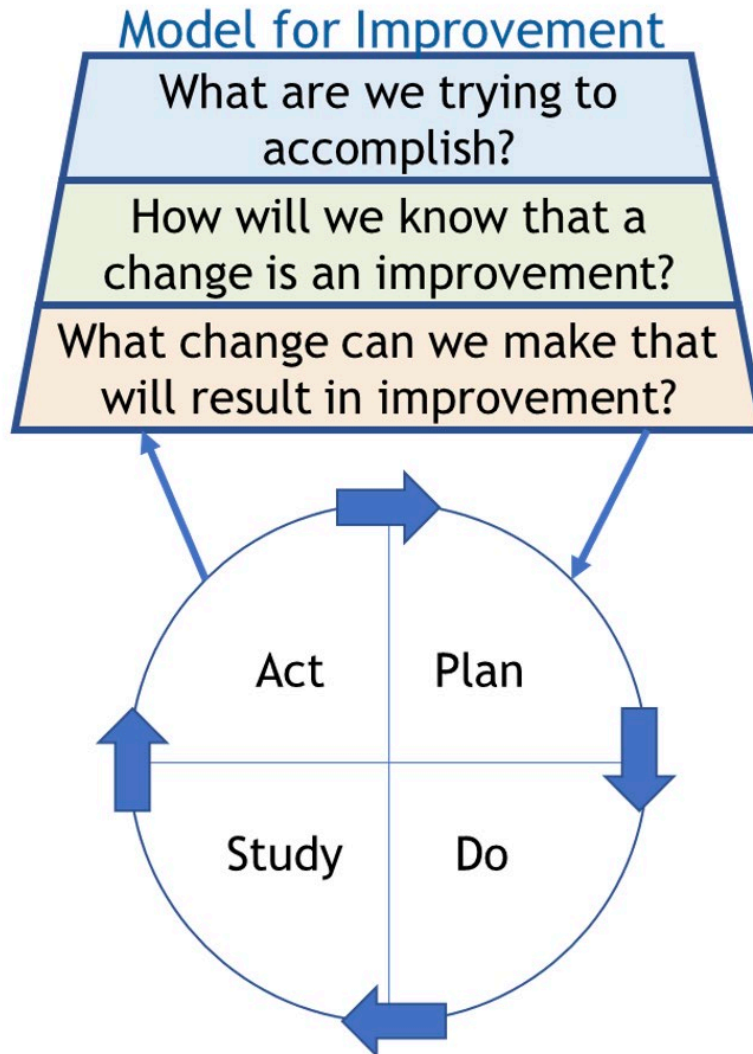
**For those who are NOT assigned, please
choose a room.**



Next Steps:

- PDSA Plan Do Study Act/Learn cycles with the changes you are measuring
- Key Driver Diagram Drafting
- https://media.emscimprovement.center/documents/EMS240118_DriverDiagram_240122.pdf

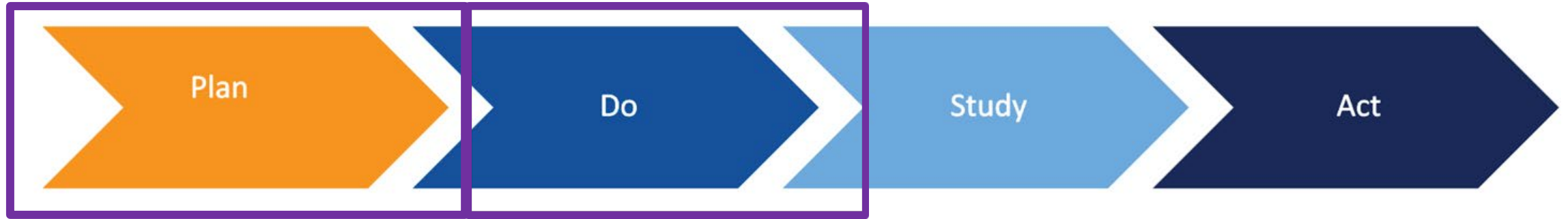
Fundamentals Questions to Ask



Not all changes lead to improvement, but all improvement requires change.

Plan □ Do □ Study □ Act

https://media.emscimprovement.center/documents/EMS240126_ImprovementTemplate_240126.pdf



- **Adopt an implementation plan**

- Develop SMART Aim
- Select a change strategy

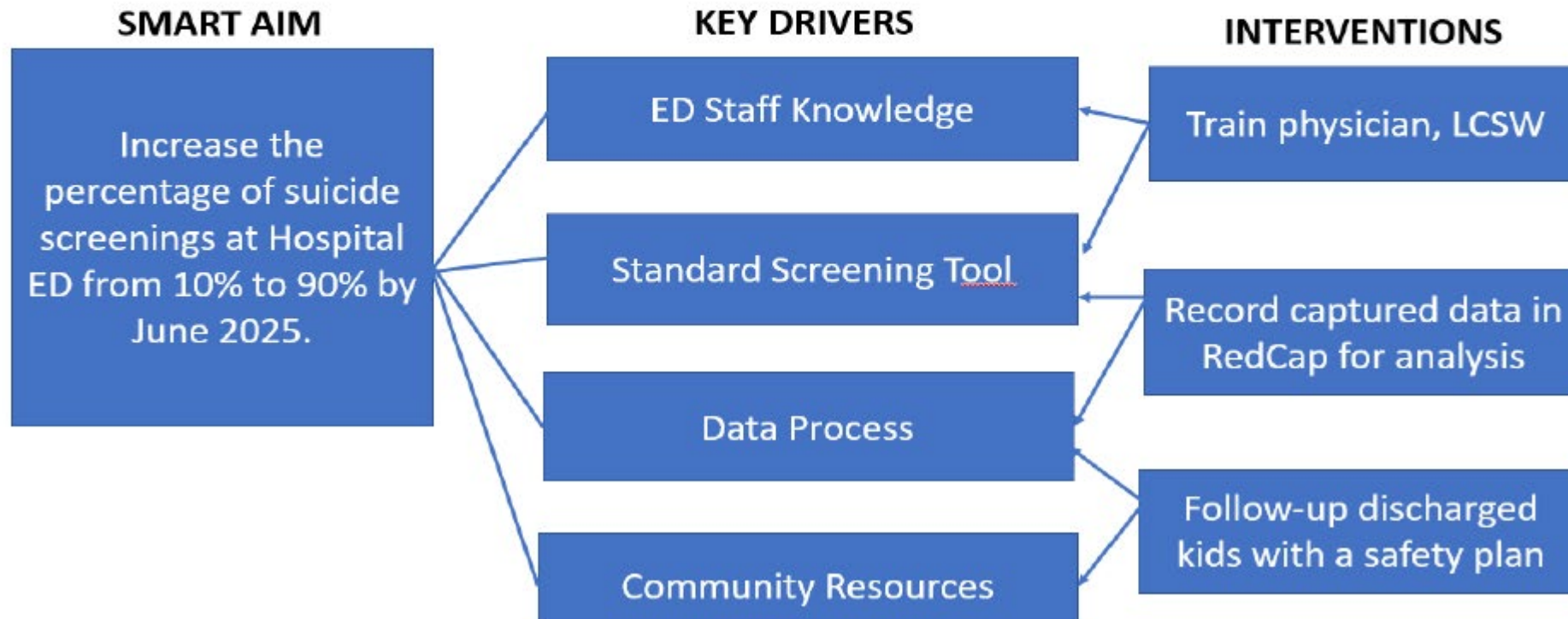
- Put the plan into action

- Rapid test of change

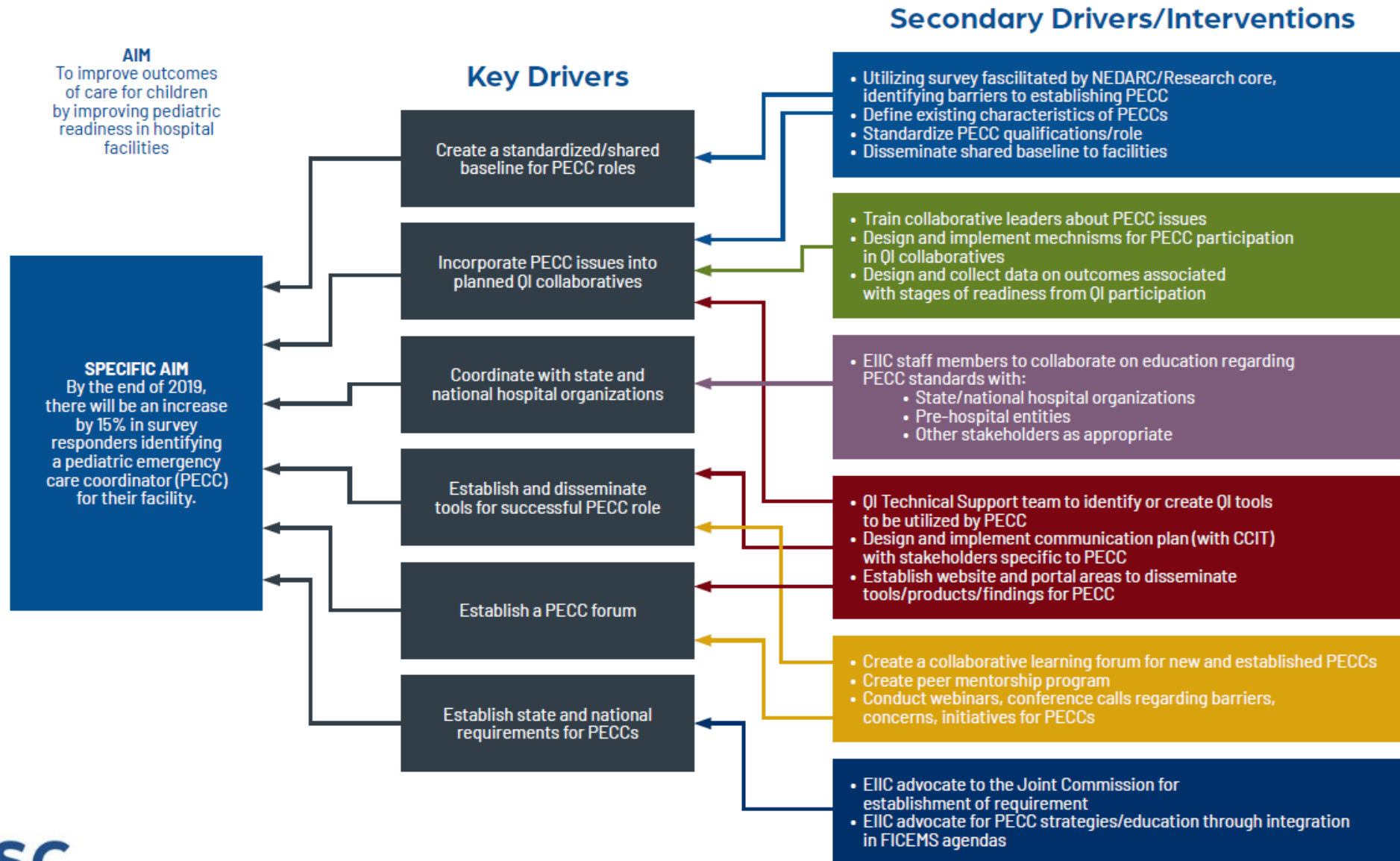
- Assess the outcome and evaluate your performance

- Consider: Was it successful? What feedback was gathered?

- Adapt or abandon the change process and implement another PDSA cycle



EMSC PERFORMANCE MEASURE KEY DRIVER DIAGRAM

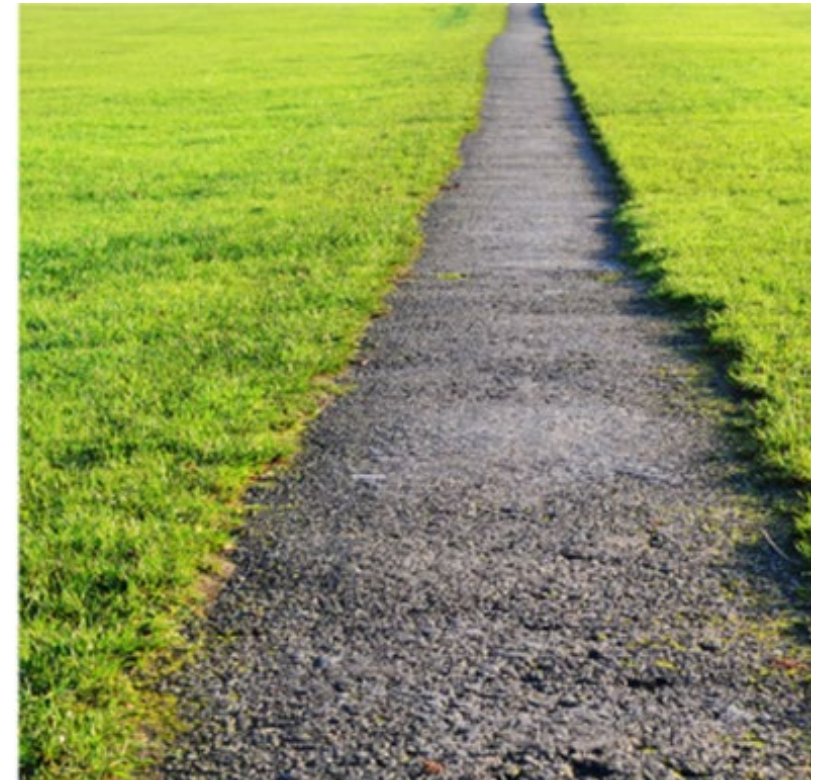


Summary April Collaborative Sessions

- **April 25-** PMHCA Providers Education and Training Projects | 2-3 PM ET

PMHCA ED Expansion Project Paths

- Projects may fall into one or more of the following project "paths":
 - Education and Training (Provider-Specific)
 - Teleconsultation (Provider-to-Provider)
 - Telebehavioral Health Services (Resource Connection)



Upcoming Webinars/Office Hours:

- **May 2** - Office Hours: Meet with Data Analyst – Data Platforms Considerations | 3- PM ET
 - **May 7** – Pediatric Needs During Times of Disaster – Part 2 with Trevor Covington | 2-3 PM ET
 - **May 21**– Emergency Department Provider Insights on Pediatric Mental Health Role of the PMHCA with Ann Dietrich. | 3-4PM ET
-
- **June 13** -Webinar: PMHCA ED Expansion Toolkit Tutorial – Installation Phase with Oklahoma PMHCA | 2-3 PM ET
 - **June 25** - Office Hours: Meet with a QI Coach-Key Driver Diagram drafting and PDSA assistance - prep for July Meeting in Cleveland-| 3-5 PM ET



Registration Reminder: Cleveland Meeting

Travel information went out for hotel and travel – please reach out to Jen Donathan (pmhcatravel@gmail.com) with questions.

Dates: July 22-24, 2024

Location: Hotel Cleveland

Website:

A promotional banner for the Pediatric Mental Health Care Access (PMHCA) Annual Meeting. The banner features a blue background with a cityscape of Cleveland, Ohio, and a large stone statue of a woman holding a vintage car. The text is in white and blue. In the bottom left corner, there is a circular logo with a bear head and the acronym 'EIIIC'. In the bottom right corner, the text 'Cleveland, Ohio' is displayed.

TRAVEL INFORMATION

Pediatric Mental Health Care Access (PMHCA) Annual Meeting

July 22–24, 2024

Cleveland, Ohio



Thank you for your participation!