



Fireside Chat Your Data Questions Answered

December 5, 2023

Acknowledgments

The EMSC Innovation and Improvement Center is supported by the Health Resources and Services Administration (HRSA) of the U.S. Department of Health and Human Services (HHS) as part of an award (U07MC37471) totaling \$2.5M with 0 percent financed with nongovernmental sources. The contents are those of the author(s) and do not necessarily represent the official views of, nor an endorsement by, HRSA, HHS or the U.S. government. For more information, visit HRSA.gov.





Thank you for joining!



Session is being recorded and posted online along with slides



Utilize the Q&A feature to ask questions



Place your name in the chat for nursing and social work credit



Discussion will follow presentation

Objectives

After participating in this session, attendees will be able to:

- Identify non-biased data sampling strategies
- Enter, edit, and audit PRQC data
- Interpret site-specific performance dashboards

Speakers

Sanyukta (Sanya) Desai, MD, MSc

Assistant Professor of Pediatrics

Dell Medical School at the University of Texas at Austin



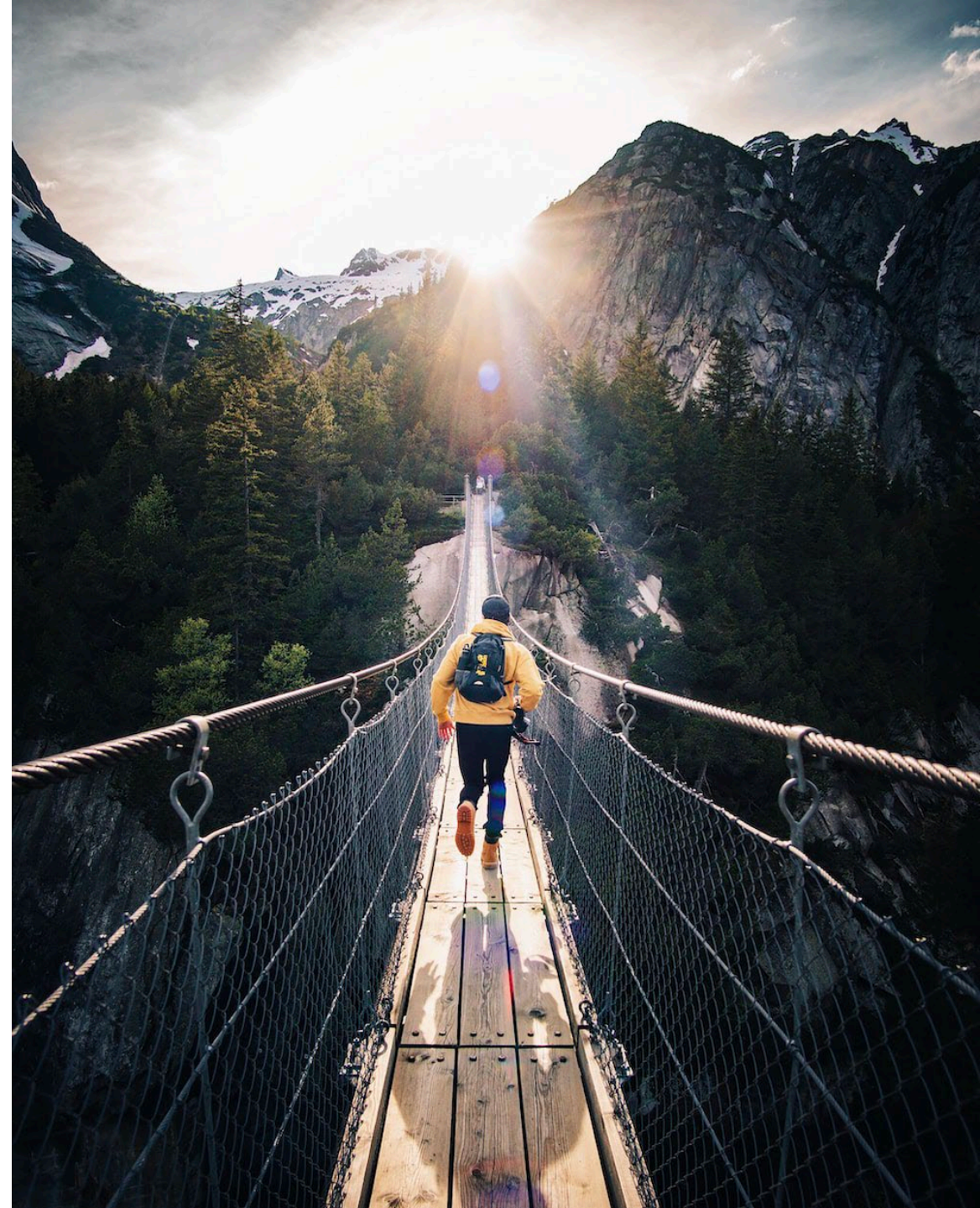
Liza Hinojosa, BS

Senior Program Coordinator

National Pediatric Readiness Quality Initiative



Choose Your Adventure



Beginning Data Entry



EMSC
Quality Improvement
Collaboratives

Creating – Subject IDs



Creating Subject IDs

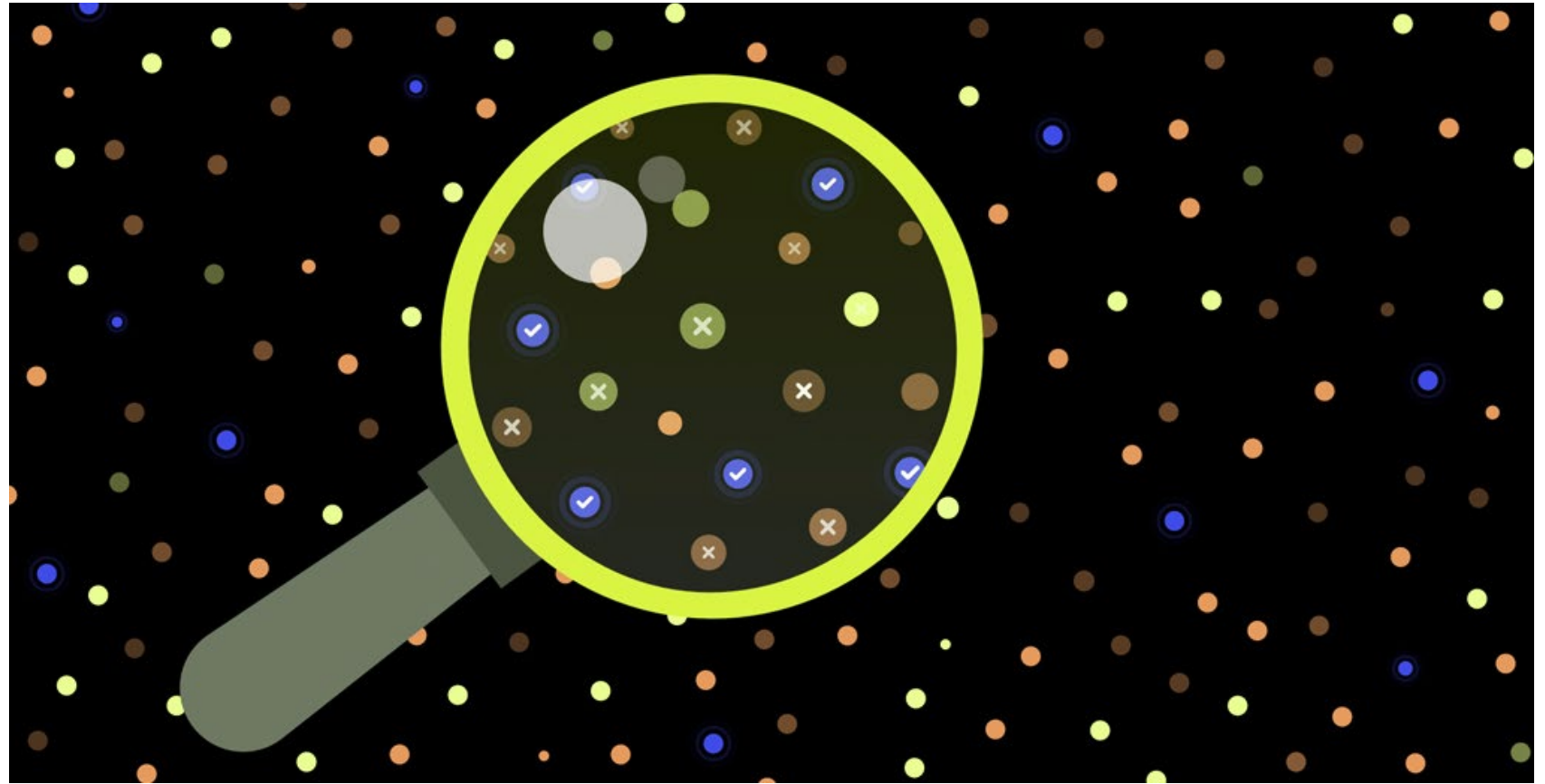
format: users first initial, last initial + 4 digits
(ex: LH001, LH002, etc.)

Do not use actual patient record ID for data entry

Develop and Maintain Subject ID Log

BUNDLE(S)	User Name	SUBJECT ID	MRN	Date of Birth	Date of Visit
	Liza Hinojosa	LH0001	83998763	xx/yy/zzzz	xx/yy/zzzz
	Liza Hinojosa	LH0002	48299861	xx/yy/zzzz	xx/yy/zzzz
	Liza Hinojosa	LH0003	99811722	xx/yy/zzzz	xx/yy/zzzz
	Liza Hinojosa	LH0004	47936502	xx/yy/zzzz	xx/yy/zzzz
	Liza Hinojosa	LH0005	30184412	xx/yy/zzzz	xx/yy/zzzz
	Alice Smith	AS0001	12938274	xx/yy/zzzz	xx/yy/zzzz
	Alice Smith	AS0002	12305123	xx/yy/zzzz	xx/yy/zzzz
	Alice Smith	AS0003	85773922	xx/yy/zzzz	xx/yy/zzzz
	Alice Smith	AS0004	92018347	xx/yy/zzzz	xx/yy/zzzz
	Alice Smith	AS0005	48392713	xx/yy/zzzz	xx/yy/zzzz

Data Sampling



Identifying Pediatric Patients

- Retrospective search of EHR (by dates and patient age)
- IT support (automated pull by patient age)
- Patient log (maintain list of patients based on age)

*Unless your site has its own definition of "pediatric", use **all patients less than 18 years of age** seen in your ED as the starting point.*

Selecting Charts: Patient Sampling

Which pediatric patients should I enter into the data portal?

Best Strategy (especially for low volume sites) is to **enter ALL children into the data portal**

Casting a "Broad Net" will truly allow you to identify opportunities for improvement, and ensure you don't have any blind spots.

If you have large volumes of patients, and aren't able to enter them all in the portal, consider using one of the following **UNBIASED** sampling strategies



Selecting Charts: Patient Sampling

Recommended Strategy: *Systematic Sampling*

How to do this

- In your patient log, order all patients by date of arrival.
- Choose every other patient, every 5th patient

Note: Avoid the following as they can cause bias:

- Don't select patients seen on a particular day of the week.
- Don't skip entire time periods (e.g., a whole month)

.

Selecting Charts: Patient Sampling

Recommended Strategy: *Patient Subgroups*



How to do this:

- Select a subgroup of patients:
- E.g., if you are focusing on **suicidality**, only select patients age 10-18

Caution:

- Ensure that your subgroup is easy and reliable to identify
- Try not to make your focus too narrow while collecting baseline data. You might miss opportunities for improvement

**It is important to "cast a broader net" with baseline data collection. It allows you to review your overall performance, and you can later target and track patient subgroups as you monitor for improvement.*

Examples: Patient Sampling

Bundle 1: Weight in Kilograms

Measure: % children who have weight measured in kilograms ONLY

Target patient population: All children seen in the ED

SAMPLING STRATEGY:

Systematic Sampling:

1. Identify all pediatric patients seen in your ED
2. Enter every nth patient (e.g. every 2nd, every 5th) into the data portal

Examples: Patient Sampling

Bundle 2: *Pain Assessment*

Measure: % children who have pain assessed

Target patient population: All children seen in the ED

SAMPLING STRATEGIES:

Systematic Sampling:

1. Identify all pediatric patients seen in your ED
2. Enter every nth patient (e.g. every 2nd, every 5th) into the data portal

Examples: Patient Sampling

Bundle 3: Abnormal Vital Signs

Measures: % high acuity patients with vitals re-assessed; time to first intervention

Target patient population: All children with ESI 1,2,3

SAMPLING STRATEGIES:

Systematic Sampling: Enter every nth patient into the data portal

Patient Subgroups: you could consider entering all patients with an ESI of 1,2,3

Examples: Patient Sampling

Bundle 4: *Suicidality*

Measures: appropriate assessment and intervention for all children

Target patient population: children age 10- 18 years

SAMPLING STRATEGIES:

Systematic Sampling: Enter every nth patient into the data portal

Patient Subgroups: Children 10-18 years old

Patient Sampling

Questions?



Beginning Data Entry

Initial Login:

Must have executed POA
and secure login credentials

CLARIO.

[Forgot Password](#)

Sign in

[Terms of Use](#)

[Privacy Policy](#)

Clario Support Contact Information:

Phone: US and Canada: 1-888-275-2462
International: +1-484-928-6076

Email: Support@clario.com

Data Entry - Training

Initial Login: Complete Training

CLARIO

UT NPRQ! Settings Level3 Role SMART Portal Sign out

TRAINING OVERVIEW / LEVEL3 ROLE (LEVEL3.ROLE@GMAIL.COM)

100%

Name	Version	Module	Required			
NPRQ! PSO Introduction (12m 50s duration)	1.0	Workflow app	Yes	View materials	Training Completed	Audit trail
NPRQ! TAP Platform Site Training (19m 05s duration)	1.0	Workflow app	Yes	View materials	Training Completed	Audit trail

Data Entry Welcome Page

The screenshot shows a web interface for a 'Readiness form'. At the top right, there is a 'Save and submit' button and a status indicator 'All data saved' with a close icon. Below this is a horizontal navigation menu with tabs for 'Welcome Page', 'Patient Demographics', 'Clinical Inclusion Bundles', 'Triage', 'Initial Vitals', and 'Vital Sign Reassess'. A 'Show All Pages' button is centered below the menu. The main content area features the 'National PRQI' logo, which consists of the word 'National' in a cursive font, a green banner with the letters 'P R Q I' in white, and a bar chart with an upward-pointing arrow. Below the banner, the text 'Pediatric Readiness Quality Initiative' is written in a cursive font.

Tips: Medications for Clinical Bundles

PRQC Measure	Data Elements and Data Entry Tips
Time to First Intervention	<p>Make sure the <u>chronologically first</u> of each of the following are entered in the data portal</p> <ul style="list-style-type: none">- First medication (includes fluids and inhaled treatments)- First respiratory support (oxygen, high flow etc)

Data Entry Tips : Medications by Condition

1. Patient with Head Trauma

Measure	Data Entry Tips
% patients who received hypotonic saline	Ensure that all forms of IV fluids are entered into the data portal (specifically D5NS, LR, D5 ½ NS)

Data Entry Tips : Medications by Condition

2. Patient with Seizure

Measure	Data Entry Tips
% patients who received a non-benzo after receiving 2 benzodiazepines	Ensure that <u>all antiepileptic medications</u> are entered, under the class "Anticonvulsants" If a patient received 2+ doses of a medication (e.g. Lorazepam), please enter those as separate entries.

Data Entry Tips : Medications by Condition

3. Patient with Vomiting

Measure	Data Entry Tips
% patients who received antiemetic	Ensure that <u>all antiemetics</u> (e.g. ondansetron, compazine) are entered under the class "Antiemetics (Vomiting)"
% patients who received oral rehydration	If a patient received oral fluids, enter " <u>Oral Rehydration</u> " under the category Fluids Note: <i>you may need to search in nursing or clinician documentation for "PO challenge" or "pedialyte" to find evidence of oral rehydration</i>

Data Entry Tips : Medications by Condition

4. Patient with Respiratory Conditions

Measure	Data Entry Tips
% patients who received steroid (<i>Asthma/Croup</i>)	Enter all steroids under the class "Steroids"
% patients who received beta agonists (<i>Asthma</i>)	Enter all beta agonists under the class "Bronchodilators"
% patients who received antibiotics	Enter all antibiotics under the class "Antimicrobials"

Interpreting your Data Using NPRQI



NPRQI Dashboard

NPRQI Reporting Dashboard
59 Sites / 2,141 Records

Make your selections from the green filter bar, and Click "GO" to return your report

Year **Quarter** **Site** **Results View** **Patient Clinical Group**

Select all that apply Limit the # of Quarters by selecting Year(s) first

2023 (All) (All) Table All Patients (Core Measures) **GO**

Number of Sites by Patient Volume Category

Number of Sites by Geographic Category

Participation in the National Pediatric Readiness Quality Initiative

© 2023 Mapbox © OpenStreetMap

National PRQI

CLARIO.

The NPRQI is supported by the Health Resources and Services Administration (HRSA) of the U.S. Department of Health and Human Services (HHS) as part of an award totaling \$1.2M with 0% percentage financed with nongovernmental sources. The contents are those of the author(s) and do not necessarily represent the official views of, nor an endorsement, by HRSA, HHS or the U.S. Government.

Last Dataset Refresh:
Null

Last Patient Included:
11/29/2023

Table View – NPRQI Core Measures

Performance Report:
Dates: 2023 Q3 to 2023 Q3 | Clinical Measures Group: All Patients (Core Measures)

Measures with fewer than 10 records will not be displayed

*Cohort performance represents the average of site performances for sites within the same patient volume category (displayed with minimum of 5 sites)

**National performance represents the average of site performances across all participating sites (displayed with a minimum of 5 sites)

[Back to Landing](#)

Last Dataset Refresh:
11/9/2023 12:22:12 PM
Last Patient Included:
9/27/2023

Patient Volume	Bundle	# of Sites	# of Records	Quality Measure	Your	National	Cohort	
					Performance	Performance **	Performance *	
Medium to High: 5,000 - 9,999 pedi...	ASSESSMENT	1	20	% of pediatric patients with weight documented in kilograms only	100.0%	63.2%	74.2%	
				% of pediatric patients with pain assessed	100.0%	76.7%	69.8%	
				Median ED length of stay	234.5 minutes	192.5 minutes	239.8 minutes	
	ABNORMAL VITAL SIGNS	1	11	% of high acuity pediatric patients with vital signs re-assessed	63.6%	80.4%	77.0%	
				Median time from triage to first intervention	38.5 minutes	48.7 minutes	47.1 minutes	
	TRANSFER OF PATIENTS	1	2	% of transferred pediatric patients who met site-specific transfer criteria	--	97.1%	100.0%	
Median time from triage to transport				--	537.7 minutes	543.4 minutes		
% of transferred pediatric patients who were discharged from the receiving ED				--	1.9%	0.0%		

Patient Demographics

Patient level filters are not applied to the National or Cohort Performance Metrics.

Age Category

Triage Level

Ethnicity

Race

Gender

Payor Source



Geography: All | Patient Volume: All | ED Configuration: All | Specialty Center Status: All
Age Category: All | Triage Level: All | Ethnicity: All | Race: All | Gender: All | Payor Source: All

The NPRQI is supported by the Health Resources and Services Administration (HRSA) of the U.S. Department of Health and Human Services (HHS) as part of an award totaling \$1.2M with 0% percentage financed with nongovernmental sources. The contents are those of the author(s) and do not necessarily represent the official views of, nor an endorsement, by HRSA, HHS or the U.S. Government.

CLARIO.



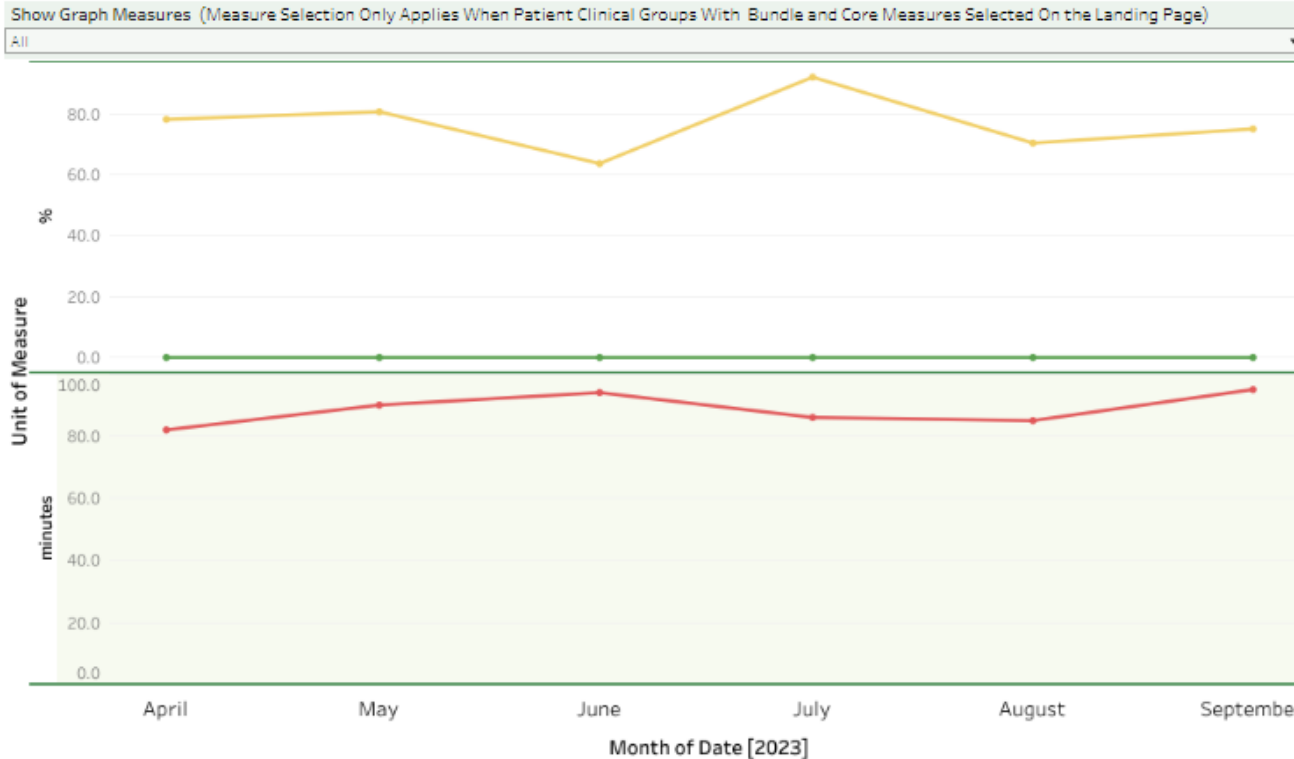
EMSC
Quality Improvement
Collaboratives

Graph View – NPRQI Core Measures

Performance Report:
Dates: 2023 Q2 to 2023 Q3 | Clinical Measures Group: All Patients (Core Measures)
Measures with fewer than 10 records will not be displayed

[Back to Landing](#)

Last Dataset Refresh:
11/9/2023 12:22:12 PM
Last Patient Included:
9/27/2023



Graph - Legend

Ctrl + Click to select multiple Measures to be displayed

- % of pediatric patients with weight documented in kilograms only
- % of pediatric patients with pain assessed
- Median ED length of stay
- % of high acuity pediatric patients with vital signs re-assessed
- Median time from triage to first intervention
- % of transferred pediatric patients who met site-specific transfer criteria
- Median time from triage to transport
- % of transferred pediatric patients who were discharged from the receiving ED

Patient Demographics

- Age Category:
- Triage Level:
- Ethnicity:
- Race:
- Gender:
- Payor Source:



Geography: All | Patient Volume: All | ED Configuration: All | Specialty Center Status: All
Age Category: All | Triage Level: All | Ethnicity: All | Race: All | Gender: All | Payor Source: All

The NPRQI is supported by the Health Resources and Services Administration (HRSA) of the U.S. Department of Health and Human Services (HHS) as part of an award totaling \$1.2M with 0% percentage financed with nongovernmental sources.

CLARIO.

The contents are those of the author(s) and do not necessarily represent the official views of, nor an endorsement, by HRSA, HHS or the U.S. Government.



EMSC
Quality Improvement
Collaboratives

Reference Materials



Data Portal Resources

- **Data Entry Record Form:** A guide to all the questions in the NPRQI data portal
- **Data Collection Reference Guide:** Details all the data points collected
- **Data Elements for Clinical Bundles:** Outlines all the data points needed to correctly calculate the numerator and denominator for each clinical quality measure
- **Data Entry User Guide:** A “how-to” step by step instructions on entering data and analyzing data entry reports
- **Military Clock Conversion Chart:** Chart to easily convert 24-hour military time to 12-hour standard time
- **IDC-10 Codes:** Quickly find common pediatric diagnosis codes



NPRQI Optional Office Hours

(sign up for individual time)



December 13, 2023

Reflecting on First PDSA Cycle



December 19, 2023

Join Us for Upcoming Sessions!

PRQC Reminders

- Pediatric Readiness Quality Improvement Collaborative (PRQC) Participants - POA must be submitted by **December 15, 2023**
- 2023 data must be entered by **January 31, 2024**
- Annual survey coming soon

Please Complete Session Evaluation

Thank you!



Nursing - CE contact hours

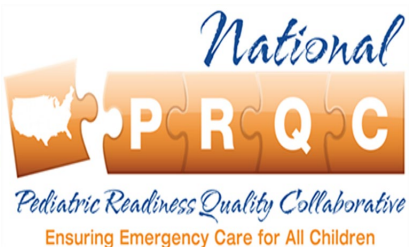
Fireside Chat #7 December 5, 2023

1. Enter your first and last name in the **chat** if you have not done so already
2. Scan the QR code/use link to access session evaluation
3. Submit completed evaluation by 1700 (Pacific) on 12/7/2023 to be eligible for CE hours



<https://bit.ly/PRQCFireside7>

If you have any questions, please contact Robin Goodman at
robin.goodmanrn@gmail.com



BRN CE Provider: Pediatric Liaison Nurses Los Angeles County. Provider approved by the California Board of Registered Nursing, Provider # 15456, for 1 Contact Hours

Social Work Professionals – CEU's

Fireside Chat # 7: December 5, 2023

1. Enter your first and last name in the **chat** if you have not done so already
2. Scan the QR code/use link to access session evaluation

